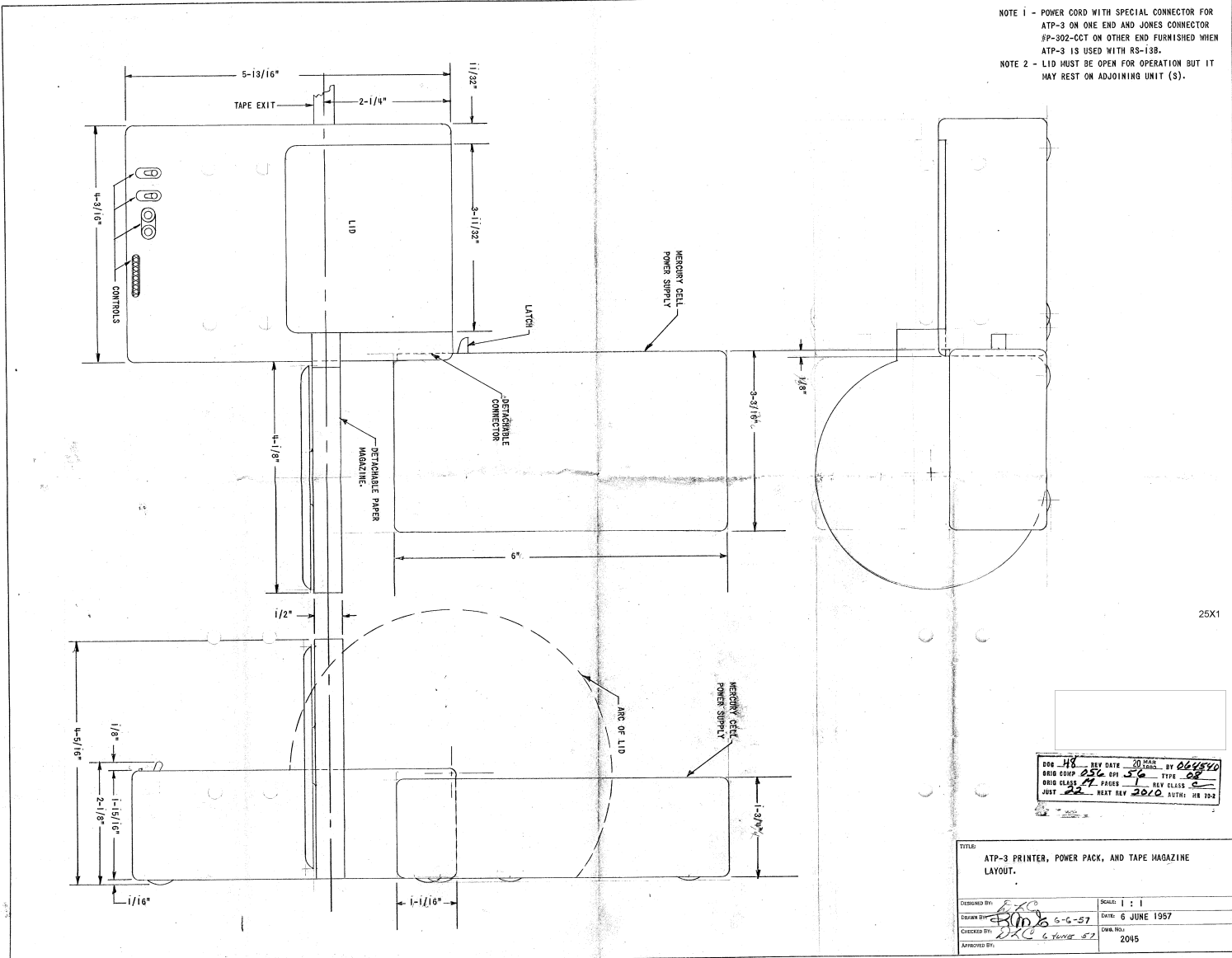


CONFIDENTIAL

NOTE 1 - POWER CORD WITH SPECIAL CONNECTOR FOR ATP-3 ON ONE END AND JONES CONNECTOR 9P-302-CCT ON OTHER END FURNISHED WHEN ATP-3 IS USED WITH RS-138.

NOTE 2 - LID MUST BE OPEN FOR OPERATION BUT IT MAY REST ON ADJOINING UNIT (S).



25X1

DESIGNED BY: <i>HR</i>	REV DATE: 30 MAR 57	BY: <i>HR</i>
ORIG COOP: <i>256</i>	ORIG DFN: <i>56</i>	REV: <i>02</i>
ORIG CLASS: <i>4</i>	PAGES: <i>1</i>	REV CLASS: <i>0</i>
JUST: <i>22</i>	NEXT REV: <i>2010</i>	ASTN: <i>HR 202</i>

TITLE: ATP-3 PRINTER, POWER PACK, AND TAPE MAGAZINE LAYOUT.	
DESIGNED BY: <i>HR</i>	SCALE: 1 : 1
DRAWN BY: <i>HR</i>	DATE: 6 JUNE 1957
CHECKED BY: <i>HR</i>	DRAW. NO.: 2045
APPROVED BY: <i>HR</i>	

CONFIDENTIAL